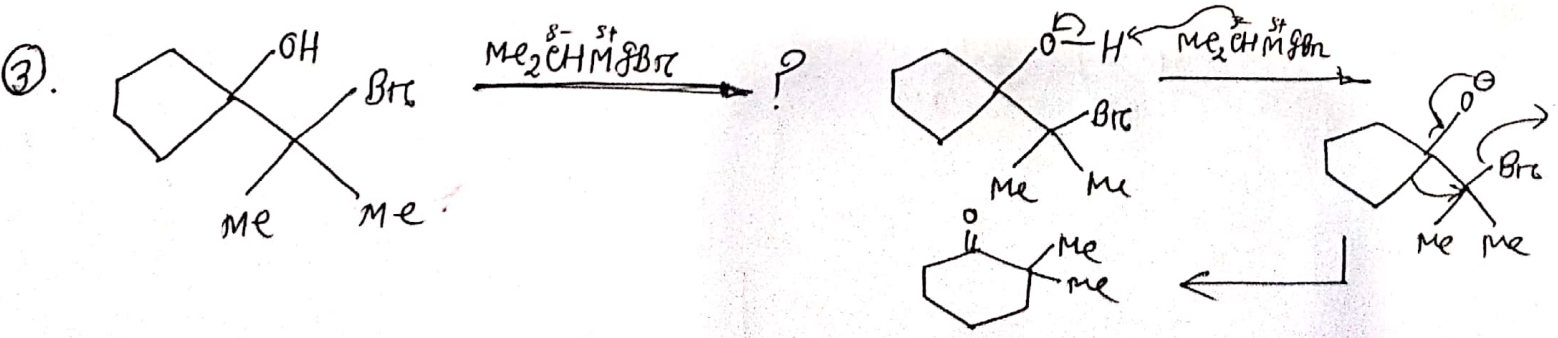
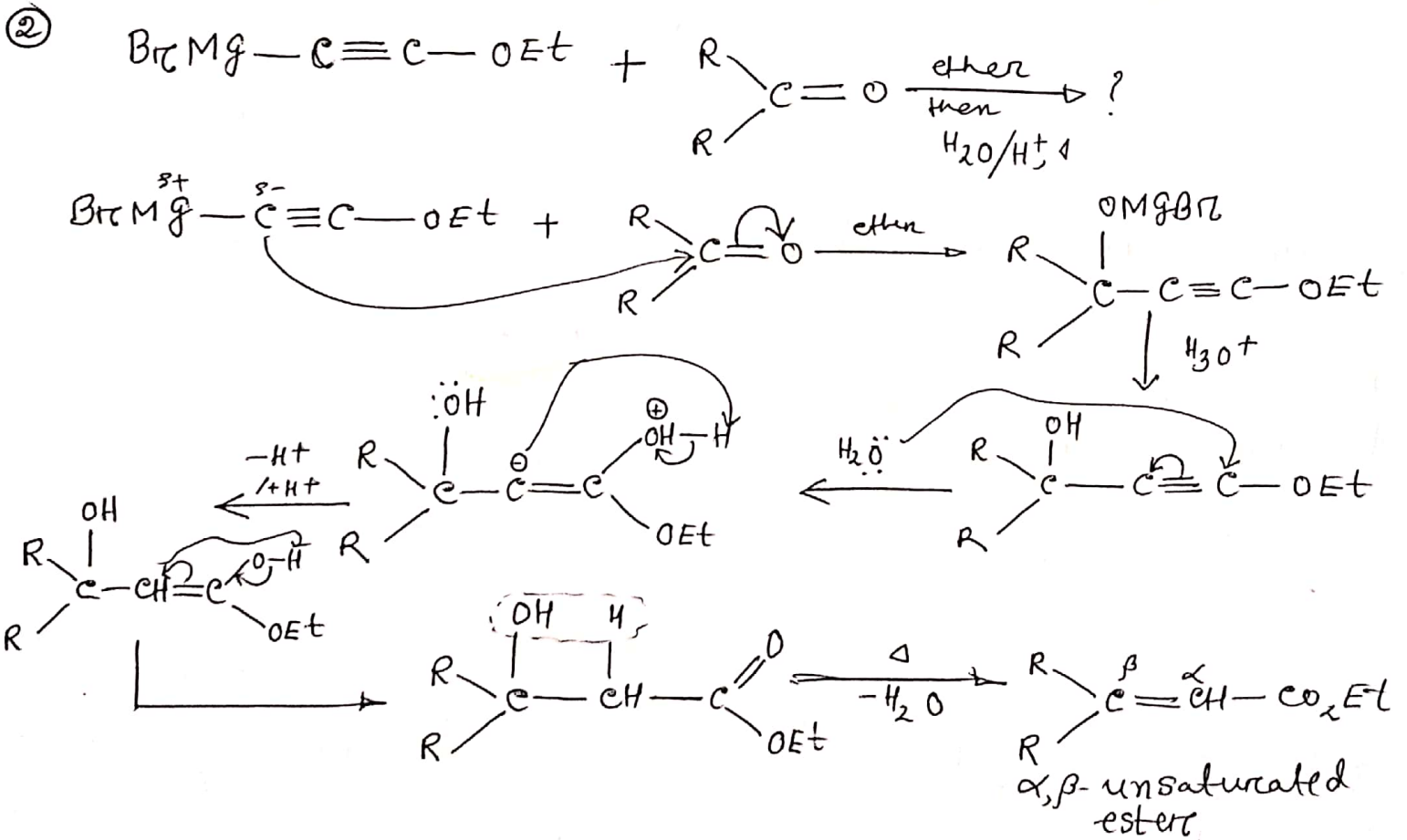
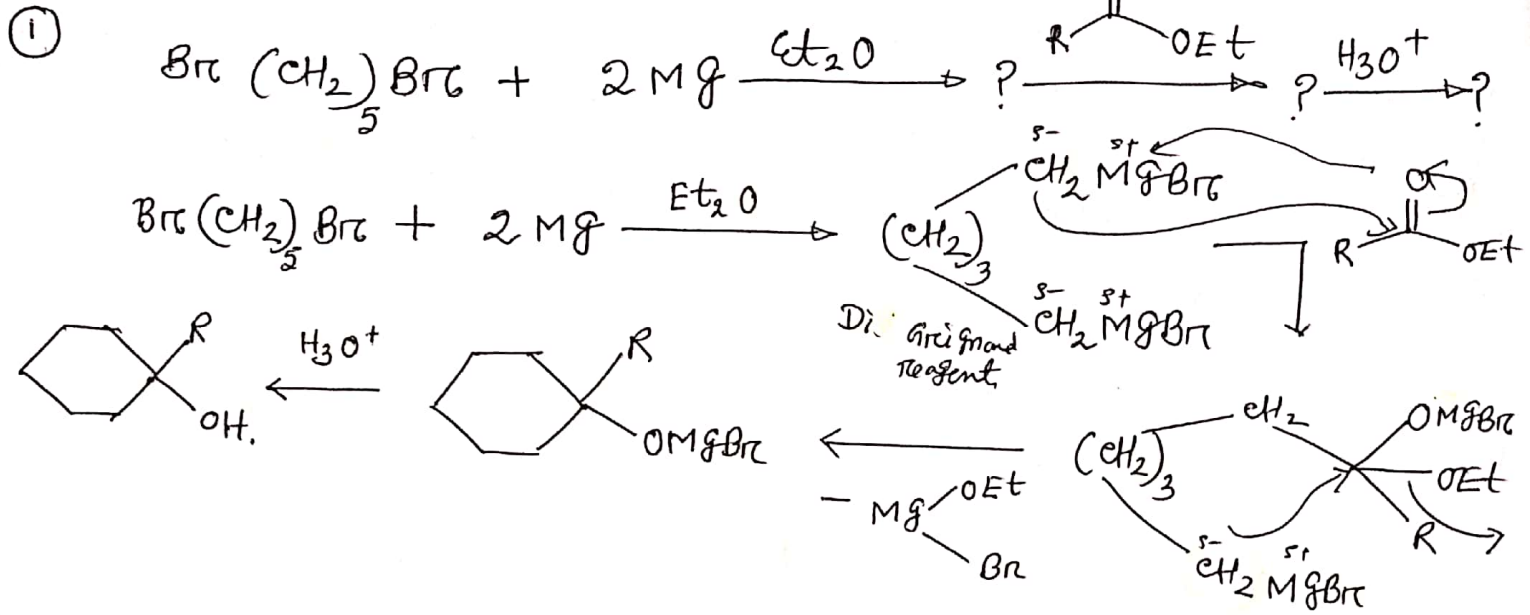
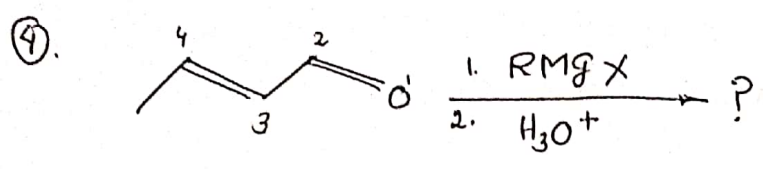
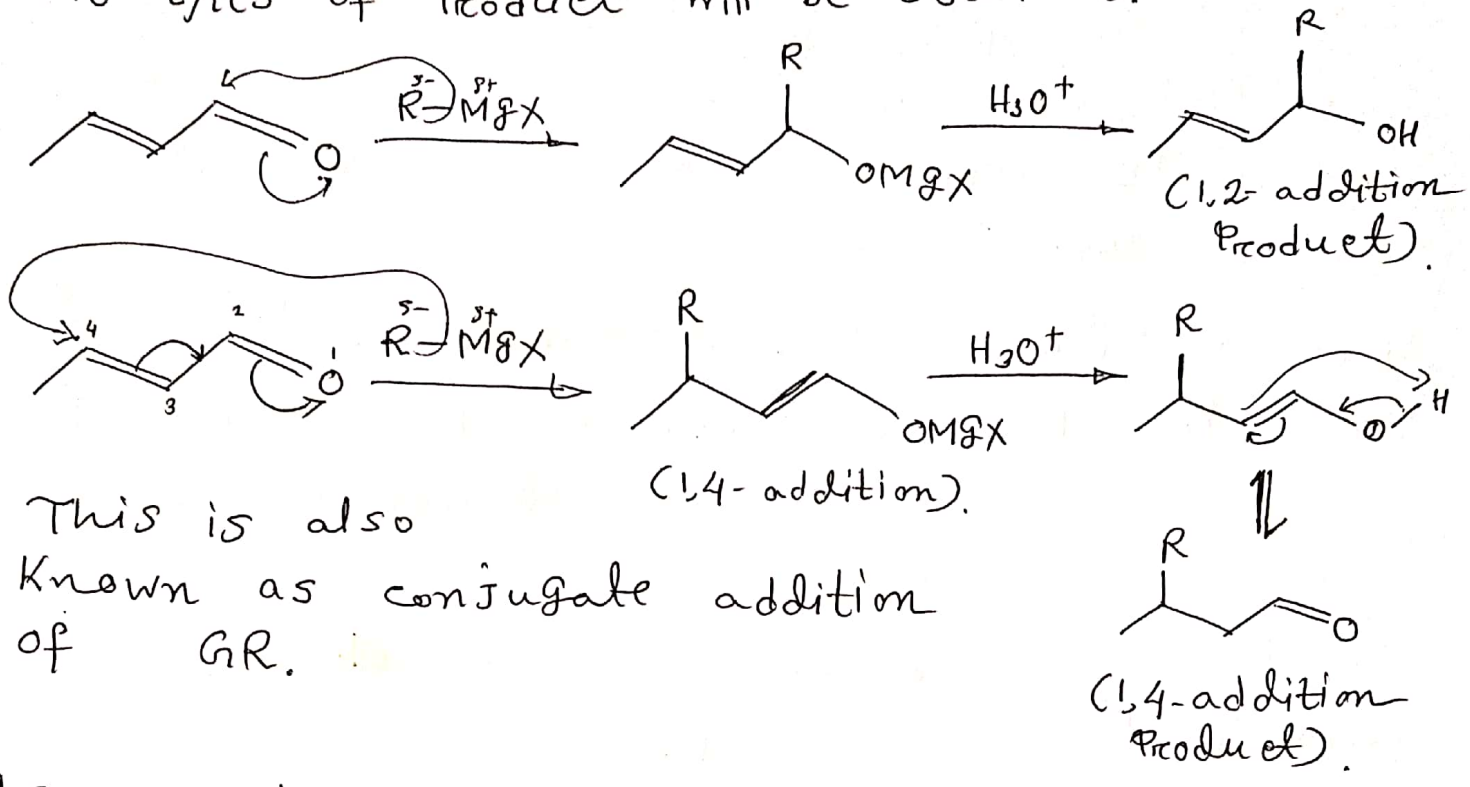


Miscellaneous Rexn





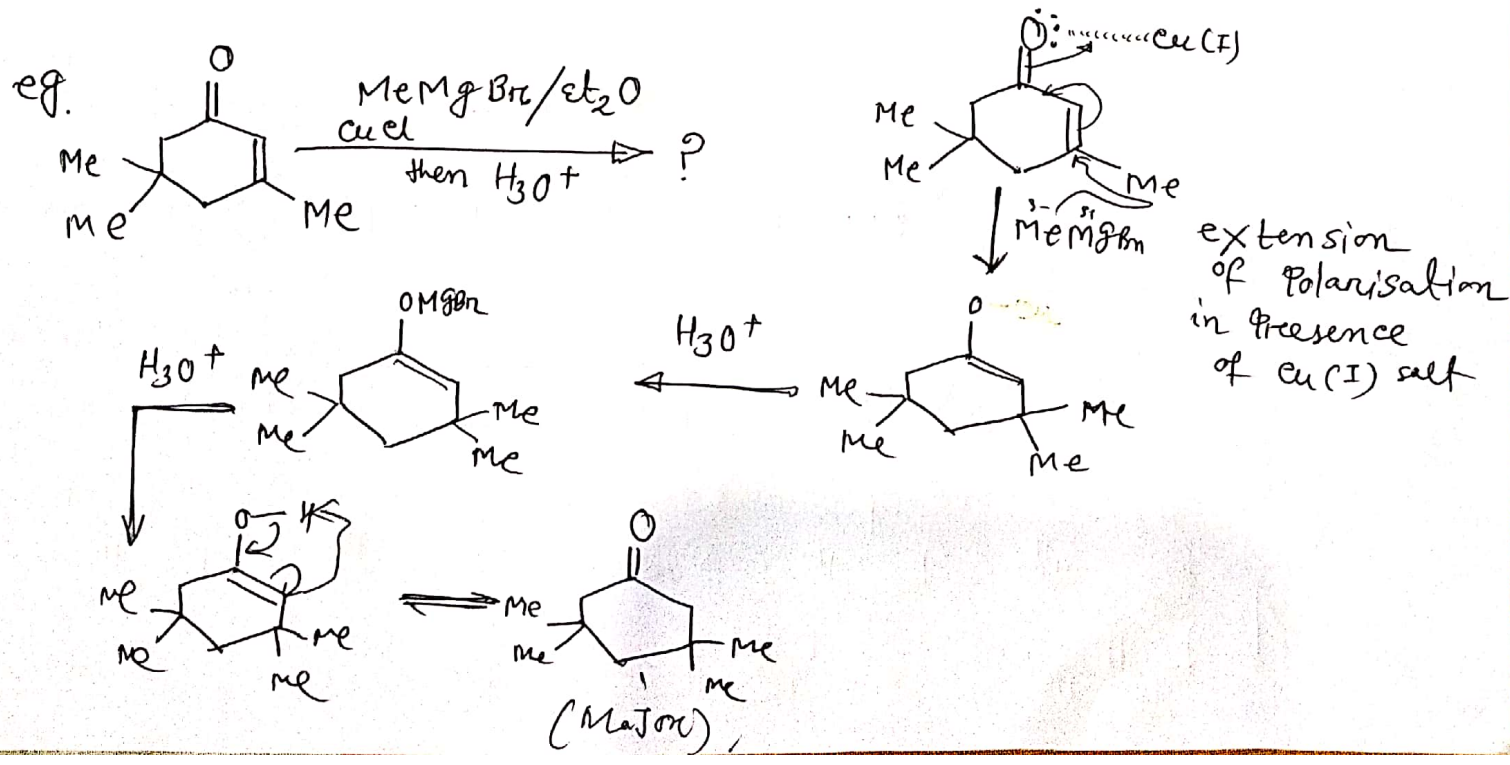
Two types of Product will be obtained.



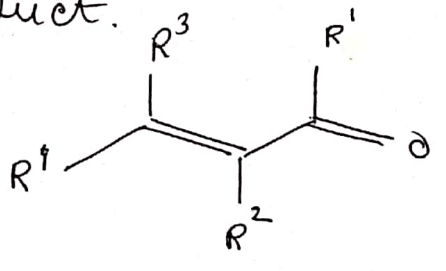
This is also known as conjugate addition of GR.

The major/minor Product distribution depends on -

- 1) steric factors on C₂, C₃ or C₄ Position
- 2) Presence of Cu(I) salt \Rightarrow Favours 1,4-add. Product.



Steric influence on the 1,2 and 1,4 addition product.



• if $R^2 = H$, $R^3, R^4 = H$ or alkyl group, but R^1 is sterically crowded gr. then

$$\left. \begin{array}{l}
 1,4\text{-add. Pdt} \Rightarrow \text{Major} \\
 1,2 \text{ " Pdt} \Rightarrow \text{Minor}
 \end{array} \right\}$$

• But, if R^3, R^4 both are sterically crowded group and R^1 is H \rightarrow then 1,2 add. Pdt are major product.

